

MEDIA RELEASE

THE ASSEMBLY RELEASE 1 AT COOLBELLUP 40% SOLD

For Immediate Release

Perth, 20 April 2016; For first-homebuyer Michelle Tan, affordability, as well as the opportunity to live near Fremantle made buying in The Assembly at Coolbellup an easy choice.

The 28 year old – who works in the port city – loves the suburban lifestyle and being close to home.

“I love working in Fremantle and being able to just go down to the beach and local markets on the weekends” she said. “The blocks at The Assembly were affordable and close to shops, schools and public transport.”

Michelle purchased a 375sqm lot where she’ll be able to build a three to four bedroom, two bathroom home with two carbays and expects to move in within 12 months.

“I love the parks and all the established trees and it seems like a really nice area. I can’t wait to move in and get to know my new neighbours,” she said.

Sales have been strong at The Assembly – Lendlease and LandCorp’s redevelopment of the third and final former school site in Coolbellup – with forty per cent of available lots in Release One sold.

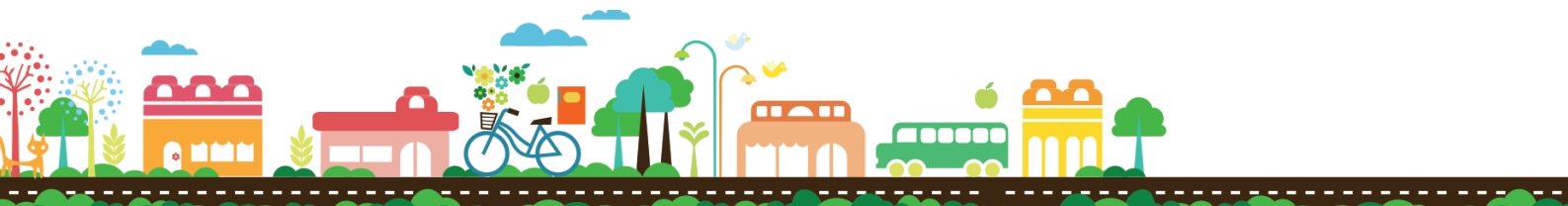
Located at the previous Koorilla school site, The Assembly builds on the strong foundations laid by the first two community developments, The Primary and The Playground.

The 4ha parcel of land — which is bounded by Coolbellup Avenue, Cordelia Avenue, Benedick Road and Rosalind Way – features 40 green-title residential lots ranging in size from 188-462sqm and one Grouped Dwelling Site. Remaining lots priced from \$220,000 available as land-only sites, or house-and-land packages.

Anthony Rowbottam, General Manager of the Lendlease Communities business in WA, said that all remaining Release One lots are now open for sale and while this was a limited release there is a great range of lots still available including house and land packages with Summit Homes Group.

“This is the last development of former school sites in Coolbellup and may be your final opportunity to build your dream home in this established, leafy suburb,” he said.

“The Assembly at Coolbellup is only 3km away from Murdoch University and Fiona Stanley Hospital, Fremantle is 6.5km and Murdoch train station only four stops from the CBD.”



LANDCORP



lendlease

THE ASSEMBLY

AT COOLBELLUP

As with The Primary and The Playground, The Assembly's planning and urban design had been carefully considered and inspired by the site's former school use, he said.

"A significant investment in advanced native trees and plantings will ensure the area's natural beauty and amenity is highlighted for all residents and visitors," Mr Rowbottam said.

LandCorp chief executive officer Frank Marra said Lendlease and LandCorp had delivered two vibrant new communities in Coolbellup which was being recognized throughout the state with The Primary winning the category award for best residential development under 250 lots at the Urban Development Institute of Australia's WA Awards for Excellence in August and The Assembly is being created to the same high standard.

To purchase at The Assembly phone Nimit Acharya on 1300 730 923.

To find out more about The Assembly visit www.theassemblyatcoolbellup.com

ENDS

For further information, please contact:

Rachael Cochrane, State Manager – External Affairs WA/SA, 0477 355 545
rachael.cochrane@lendlease.com

About Lendlease

Lendlease is a leading international property and infrastructure group. Listed on the Australian Securities Exchange and with circa 11,900 employees worldwide, Lendlease's capabilities span the property value chain. In Australia we offer development management; investment management; project management & construction and asset & property management. Our expertise covers multiple sectors including commercial, residential, retail, retirement and infrastructure.

About LandCorp

LandCorp has a critical role to play in realising the potential of land and infrastructure developments for all Western Australians. This involves the delivery of land for living and land for working to help build the State's social and economic prosperity. The result is the creation of new metropolitan and regional communities which are sustainable, integrated and connected.

For more information visit <http://www.landcorp.com.au/>



LANDCORP



lendlease

THE ASSEMBLY

AT COOLBELLUP